


Effective Date: 10/13/2010	 Service Bulletin	Revision 3
Warranty: Parts & Labor	Replacing the DCI MCB / Daughter Board Combination with a Delta MCB	Revised Date: 6/9/11
Time Required: 1 Hour	Serial Numbers Affected: T5x (-02, -03 or -04) / T7x / T7xe Treadmills	Prepared by: Kevin Oeltjenbruns

DESCRIPTION

The MCB has been updated on T5x, T7x, and T7xe treadmills.

SOLUTION

This instruction is to show how to replace the existing DCI motor control board / daughter board combination with a Delta MCB.

PARTS REQUIRED

Delta MCB Upgrade Kit – 1000206899

Software – 2.9 or above for T7xe, 1.10 or above for T7x, and S008 or above for T5x-02 (-03, -04)

TOOLS REQUIRED

Phillips Screwdriver

Wire Cutter or Safety Razor

PROCEDURE

1. Update the software on the console if the version is lower than listed above. Follow the instructions for updating the software included in the service manual for each product (7xe 2.9 software has separate instructions as this procedure takes 3 USB flash drives).
2. Turn off power to the treadmill and remove the power cord from the wall outlet and machine.
3. Remove the 2 screws holding the top motor cover to the frame and remove the cover (Figures A & B).



Figure A



Figure B

4. Cut any wire ties holding wiring to the MCB or daughter board (Figure C).
5. Disconnect all wiring from the DCI motor control board and daughter board. Any wiring that connected the daughter board to the MCB will not be reused.
6. Remove the 4 screws holding the daughter board to the frame and remove it (Figure D).


Effective Date: 10/13/2010		Revision 3
Warranty: Parts & Labor	Service Bulletin Replacing the DCI MCB / Daughter Board Combination with a Delta MCB	Revised Date: 6/9/11
Time Required: 1 Hour	Serial Numbers Affected: T5x (-02, -03 or -04) / T7x / T7xe Treadmills	Prepared by: Kevin Oeltjenbruns



Figure C

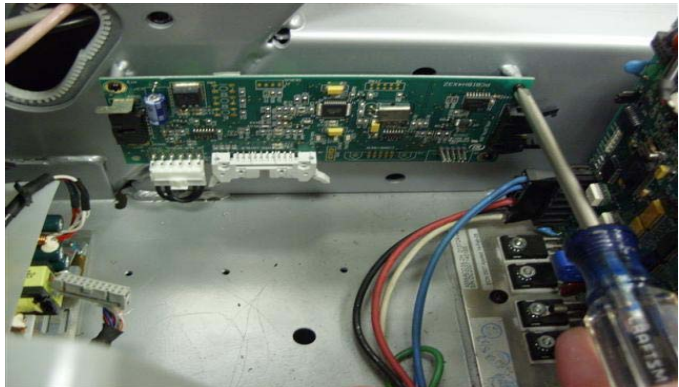


Figure D

7. Remove the 2 screws holding the MCB to the frame and remove it (Figures E).
8. Remove the AC fan, but keep the fan protector (it will be reused) (Figure F).

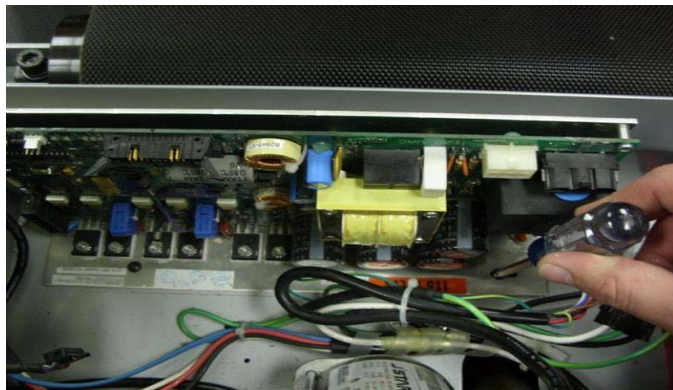


Figure E

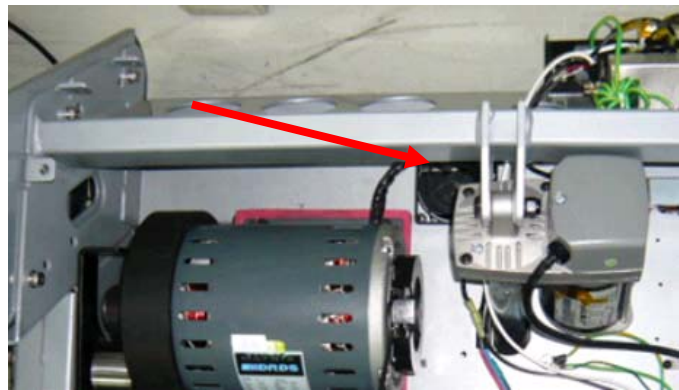


Figure F

9. Use the screws sent with the kit to attach the DC cooling fan and protector into place.
10. Use a zip tie to attach the motor cable and the MCB power cable to the screws of the fan (Figure G).
11. Use the old rolling end strap to attach the speed feedback cable and the ground cable together. Use the new rolling end strap to attach the MCB power cable and motor cable together. Use a zip tie to attach the cables to the frame (Figure H).



Figure G

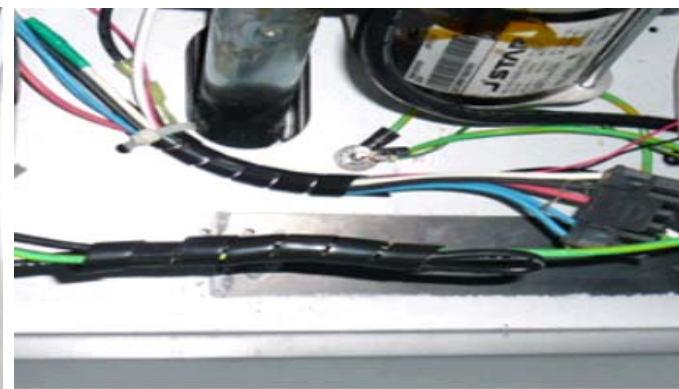



Figure H

Effective Date: 10/13/2010	 Service Bulletin	Revision 3
Warranty: Parts & Labor	Replacing the DCI MCB / Daughter Board Combination with a Delta MCB	Revised Date: 6/9/11
Time Required: 1 Hour	Serial Numbers Affected: T5x (-02, -03 or -04) / T7x / T7xe Treadmills	Prepared by: Kevin Oeltjenbruns

12. *This step is for 220V units only* – Connect two cables to the inductance. One cable should be from the MCB power cable, the other should be from the filter (the same as the DCI MCB assembly).
13. Attach the new Delta MCB to the frame with 2 screws using the existing holes in the frame that the DCI MCB used (Figure I).
14. Attach the protective cover onto the Delta MCB with 2 screws (Figure J).



Figure I



Figure J

15. Connect the wiring to the Delta MCB. There should be 5 wires total (Figure K). **NOTE:** The speed sensor wire from the motor is no longer used and should be tie strapped out of the way.



Figure K

16. Use a rolling end strap to connect the MCB power cable, ground cable, incline motor cable, and fan cables together. Use a zip tie to attach these wires to a fixed position in the frame.
17. Remove the back cover of the console and make sure that the switch on the console is set for LCB_Power.



18. Plug in the treadmill and test it at various speeds and elevations. If the unit operates correctly during testing, re-install the motor cover and console back cover.